

SCALE = 1:2500

SITE PLAN

1139000

ROAD

CENTRE

281'

150'

9"

project: PROPOSED ADMINISTRATION AND CLASSROOM BUILDING for CRUSADE FOR CHRIST INTERNATIONAL

description: BLOCK AND SITE PLAN

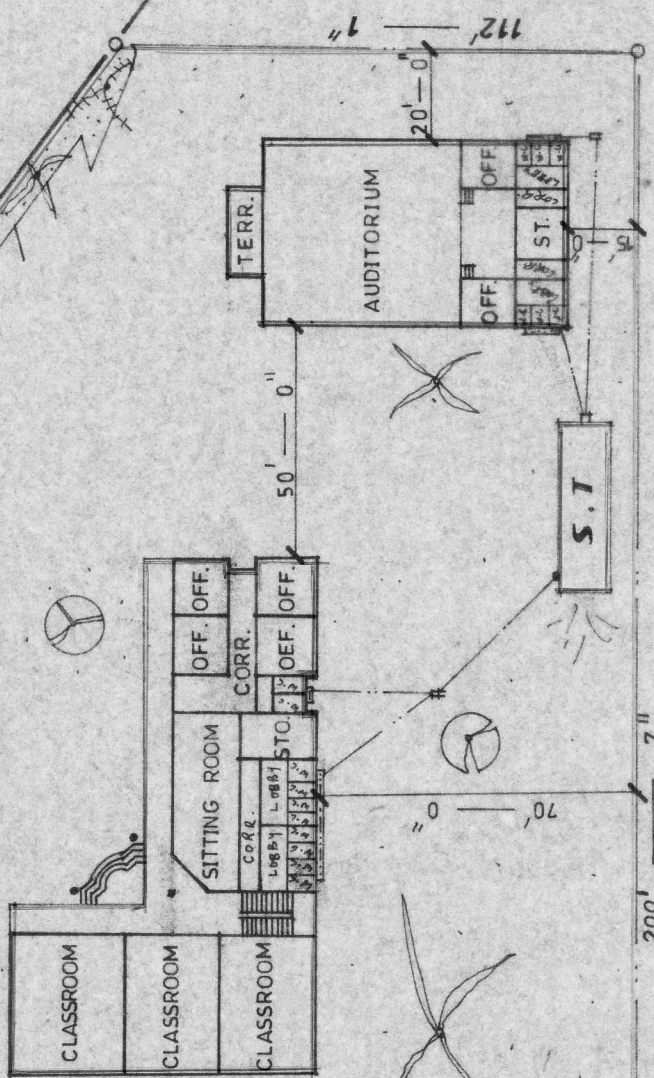
location: NSAWAH — AKUAPEN SOUTH

date: SEPT, 2009 scale: 1:40 1:2500

drawn by: JESSE NII TORGBOR 024-2922792

sheet no.: J.T.O

0"



299'

70'

50'-0"

20'-0"

112'